

*Investing in a Healthier Future for Climate
Resilience
2024*



Investing in women and vulnerable groups to build community and health system resilience to the impacts of climate change in low and middle-income countries.

CONTENTS

1. Context:.....	3
2. Objective:	4
3. Priorities for Funding.....	4
3.1 Women-centered climate adaptation and resilience:	5
3.2 Resilient Local systems for health in LMICs	5
3.3 Innovation and data-driven interventions for climate adaptation and health resilience.	5
4. What will we Fund?	6
5. Eligibility Criteria.....	7
5.1 Profile of applicants:.....	7
5.2 Geographic focus:	8
6. Foundation S is NOT able to support the following:.....	8
7. Application Review Process and Timeline:	9
8. Project Duration:	9
9. Budget.....	9
10. How to Apply.....	10
11. Proposal Submission deadline.....	10

1. Context:

Across the globe, climate change presents an unprecedented risk to human health, livelihoods, peace and development. By 2050, climate change is likely to cause an additional 14.5 million deaths and \$12.5 trillion in economic losses worldwide. Healthcare systems are predicted to face an additional \$1.1 trillion burden due to climate-induced impacts according to a World Economic Forum report on the impact of global warming on health^{1,2}.

The increased incidence of life-threatening extreme weather events, deterioration of food security, water security and sanitation, an increased risk of the transmission of deadly infectious diseases, and sea level rise are putting millions more people at risk.

Importantly, climate change will also exacerbate global health inequities. Vulnerable populations, including women, the youth, the elderly, lower-income groups, and hard-to-reach communities, will be the most affected by climate-related consequences. Sub-Saharan Africa and South-East Asia face heightened vulnerability to climate change impacts, exacerbated by existing resource limitations and inadequate infrastructure, and limited access to essential medical equipment, which will further complicate their ability to address and adapt to climate change impacts.

By 2050, climate change may push up to 158 million more women and girls into poverty and cause 232 million to face food insecurity³. Its impacts are more acute for people with limited resources and low incomes, especially for women and girls living in rural areas responsible for managing daily household resources and often needing to travel long distances to seek water, energy and health services including child, sexual and reproductive health.

In Sub-Saharan Africa and South-East Asia, both drought and flooding are impacting on agriculture, food security, housing and community infrastructure. They compromise access to clean water, sanitation and hygiene, and access to health services for the most vulnerable people and communities. In extreme situations, climate hazards leave vulnerable people with only one option: to leave their homes, land and livelihoods and

¹ Romanello, M., di Napoli, C., Green, C. & Et al. The 2023 report of the Lancet Countdown on health and climate change: the imperative for a health-centred response in a world facing irreversible harms. *The Lancet* (2023) doi: [https://doi.org/10.1016/S0140-6736\(23\)01859-7](https://doi.org/10.1016/S0140-6736(23)01859-7)

² World Economic Forum (2024). Quantifying the impact of climate change on human health: Impact Report. https://www3.weforum.org/docs/WEF_Quantifying_the_Impact_of_Climate_Change_on_Human_Health_2024.pdf

³ UNWOMEN (2023). Feminist climate justice: A framework for action. <https://www.unwomen.org/sites/default/files/2023-12/Feminist-climate-justice-A-framework-for-action-en.pdf>

live in precarity and desperate conditions.

Climate change also threatens reverse progress on maternal and perinatal health outcomes. In sub-Saharan Africa, women comprise 50% of the agricultural workforce, often working throughout pregnancy despite heat exposure increasing the risk of adverse birth outcomes. In The Gambia, a study found the *“pregnant subsistence farmers commonly experience levels of extreme heat above recommended outdoor working limits, and that this can have significant effects on their health and the health of their babies”*⁴. In addition to the health risks related to poor nutrition, water, hygiene and sanitation, the effects of exposure to climate hazards and their aftermath during and after pregnancy can affect mental health.

Paradoxically, and despite their essential role in climate adaptation efforts in impacted communities, women and other vulnerable groups still play a peripheral role in the making of policy addressing the intersection of climate and health, and for building a sustainable and resilient future for generations to come.

Amid this planetary crisis, solutions that enhance the capacity of communities to prevent, protect and build resilience to the inevitable effects of climate change are crucial. Developing these solutions will require significant investment, context-specific, and multilateral actions that leverage and improve existing capacities in health systems particularly through community initiatives.

Foundation S is committed to participating in the collective action needed to reduce the vulnerability of these communities and to supporting them in their efforts to adapt and build long-term resilience.

2. Objective:

The 2024 Climate Action & Health Resilience grants program aims to **support women and strengthen local resilience against the health impacts of climate change in low-and-middle income countries.**

3. Priorities for Funding

Foundation S funds programs that are informed and implemented by communities and that seek to address both the current and future impacts of climate crisis on community health.

⁴ Bonell A & al, “Environmental heat stress on maternal physiology and fetal blood flow in pregnant subsistence farmers in The Gambia, west Africa: an observational cohort study”. The Lancet 6:12. 2022. DOI: [https://doi.org/10.1016/S2542-5196\(22\)00242-X](https://doi.org/10.1016/S2542-5196(22)00242-X)

For the 2024 call for proposals, Foundation S will support programs and interventions that focus, at least, on one of the following **3 priority areas**:

3.1 Women-centered climate adaptation and resilience:

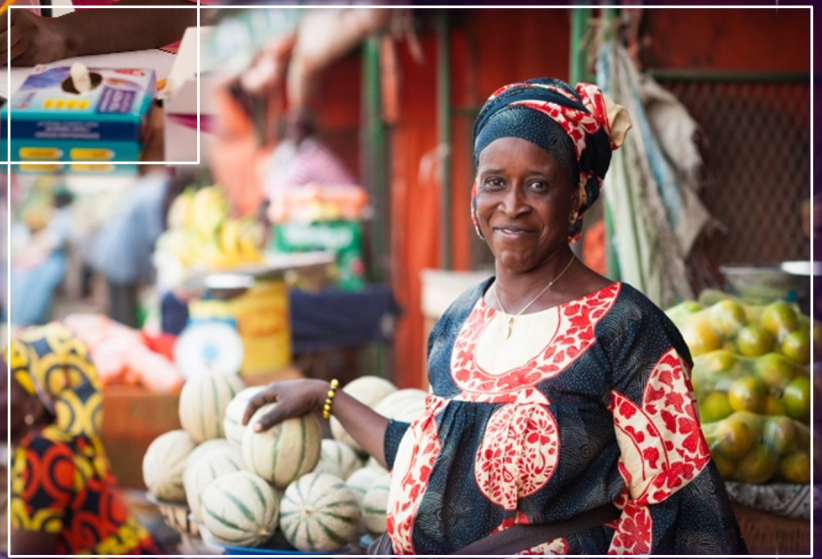
- **Gender-responsive, inclusive, locally led climate action** that recognize and mitigate women's and girls' vulnerability to the immediate and long-term adverse effects of climate change and address women's distinct health needs.
- Enhance and sustain **women's and girls' agency and uplift the leadership of their organizations and networks** in driving resilience to climate change and their influence on climate and health policies and decision-making.

3.2 Resilient Local systems for health in LMICs

- **Strengthening community systems for health** to anticipate climate impacts, to adapt services and interventions against climate-sensitive disease and health risks including developing climate-ready frontline health workers, community-based organizations, community health delivery services, and services that target the needs of the most vulnerable.
- **Local and sub-national programs that restore and extend the reach of healthcare systems** to where people face the greatest climate related barriers to accessing health services including supporting the adaptation of provision and accessibility of essential services, capacity building and training of health care professionals, and building readiness for disease outbreaks, extreme heatwaves and other climate-related emergencies.

3.3 Innovation and data-driven interventions for climate adaptation and health resilience

- **Community-centric innovative and evidence-driven interventions**, scientific solutions, health technologies that enable communities in need to access life-saving solutions promptly and equitably and that minimize climate-induced health impacts on women and other vulnerable groups health (disease outbreaks, drought, flood, heat waves.).
- Policy initiatives on climate resilience that include **data driven interventions that incorporate perspectives of women and vulnerable communities** into policymaking (including national & sub-national climate & health adaptation plans), financing, health systems strengthening, and disaster relief and response.



4. What will we Fund?

For this call for proposals, preference will be given to projects where a minimum of 80% of the budget is allocated to activities carried out within the country and the local area of implementation. These activities should directly support local climate and health adaptation efforts.

Projects to be funded must specifically align with one or more of the following:

- Projects developed, implemented, and led by community-based organizations to help vulnerable communities adapt to climate change and build resilience to health-related impacts.
- Innovative local solutions, mature or not, that have the potential to be impactful and deployed at larger scale at community, sub-national and national level.
- Projects supporting local responses, in collaboration with academic institutions/ national or international NGOs that include an embedded research

component. This can include, but is not limited to, generation of community driven data collection or analysis, quantitative health outcomes achieved, monitoring systems, the potential for sustainability and replicability, and community-specific research.

- Projects that have embedded a strong strategy to reinforce domestic capabilities and transfer plan to local organizations/ implementors for long term climate change resilience and/or health system strengthening. This includes but is not limited to the appropriate transfer of knowledge, expertise and applicable resources as they pertain to the program.
- Projects with secured co-funding or academic partners that can provide complementary funding, expertise, data quality control, evidence analysis, are strongly encouraged. In some contexts, these partnerships may be essential for the sustainability, replication, and amplification of the impacts of community-based adaptation actions.

Please note:

- **It is preferred that community-led programs work synergistically with local municipalities/ government-led efforts as local/national collaboration is an essential part of capacity building and sustainable responses to climate impacts on health.**

5. Eligibility Criteria

5.1 Profile of applicants:

For this call for proposals, relevant applicants could include:

- **Community based organizations** (organizations that are based in the local district/are/region where the intervention will be implemented and where the impacts of climate change are apparent)
- **Local NGOs, networks of civil society organizations** with a local, sub-national or national reach
- **National, regional, international NGOs** demonstrating local community involvement at all levels of the project (from strategy to implementation)
- **Consortium and multi-actor platforms** that support local responses and community adaptation.

Please note:

- **One of the aims of the 2024 call for proposal is to bring new actors and contribute to the diversification and scale of climate adaptation response, Foundation S will therefore prioritize applicants who have not been already supported in previous funding cycle.**

5.2 Geographic focus:

Foundation S has prioritized eligible low- and middle-income countries most at risk. Eligible organizations must be based in one of the following countries to apply:

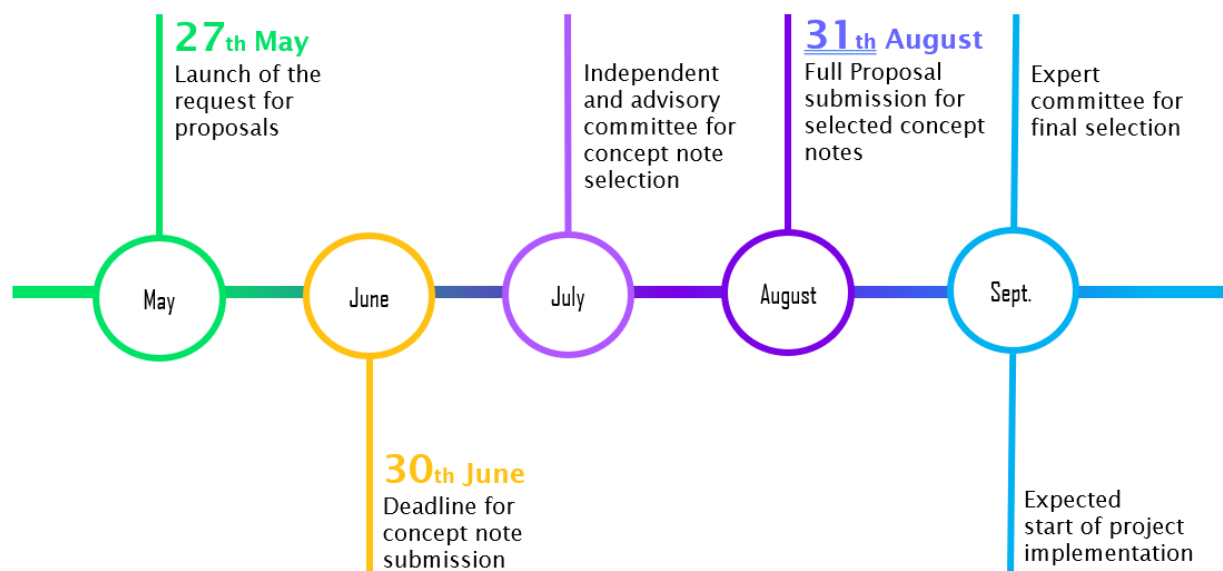
- **Asia:** Cambodia, Nepal, Bangladesh, Pakistan
- **Africa:** Mozambique, Tanzania, Togo, Zambia, Kenya, Comoros, Guinea, Senegal, The Gambia, Burkina Faso, Malawi, Zimbabwe, Burundi, Madagascar, Ethiopia, Sierra Leone, Mauritania, Benin, Uganda, Dem. Rep. of the Congo, Rwanda, Ghana, Mali, Liberia, Guinea-Bissau, Cote d'Ivoire, Chad, Niger, Cameroon, Ethiopia

6. *Foundation S is NOT able to support the following:*

- Government or governmental institutions-led projects.
- Political organizations, campaigns, and activities
- Religious organizations or groups whose activities are sectarian in purpose.
- Organizations that discriminate on the basis of race, gender, sexual orientation, gender identity, marital status, religion, age, national origin, veteran's status, or disability
- Projects that directly influence or advance Sanofi's business, including the purchase, utilization, prescribing, pricing, reimbursement, or recommendation for payment for its products
- Payment of expatriate staff nor staff headquarter based in developed countries not involved in the implementation of the Foundation S funded project.
- Mitigation programs and initiatives (CO2 reduction, carbon sequestration, energy solutions such as biofuels, clean cooking fuels etc.)
- Purchase of vehicles or construction of public buildings
- Activities or organizations that are in breach with internationally recognized UN standards, including but not limited to Human Rights, Health Safety & Security, Labor rights, Anti Bribery and Corruption, Environment & Climate change, etc.
- Basic or clinical research projects, including clinical trials, outcomes research or other pharmaceutical studies.
- Purchase of supplies or equipment unrelated to a specific project or program.

7. Application Review Process and Timeline:

The proposal submission and review will follow a multi-steps process described below:



8. Project Duration:

Foundation S seeks to support programs for a duration of **1 to 2 years**.

- Programs led by local community organizations or local innovation projects that have demonstrated sustainable impact and potential for growth will initially be awarded funding for 1 year and considered for a multi-year funding depending on the assessment of outcome and completion of goals after the 1st year of implementation.
- Projects from experienced national or international organizations that include leadership and engagement of local communities are eligible for multi-year funding when the program demonstrates a comprehensive, long-term strategy and secured co-funding.
- Projects with an embedded research component are eligible for a multi-year grant.

9. Budget

Successful projects can be awarded funding ranging from **50 000€** to **100 000€** per year.

10. *How to Apply*

Applicants will submit their concept note and complete the required organizational information through Foundation S' online Cybergrants platform found at: https://www.cybergrants.com/sanofi/foundationS_CCH_concept

11. *Proposal Submission deadline*

All proposals must be submitted to Cybergrants before:

30th of June 2024 at 23:00 CET

About Foundation S - The Sanofi Collective

Foundation S, Sanofi's philanthropy engine, seeks to create healthier futures for generations to come. Through a "Think & Do Tank" approach, Foundation S aspires to amplify innovation and collaboration as well as support concrete actions to improve the lives of people in vulnerable communities, in 4 commitment areas:

- Fighting childhood cancer, with our legacy initiative My Child Matters
- Increasing health resilience of climate vulnerable populations around the world
- Contributing to sleeping sickness elimination by 2030 and leveraging innovative partnerships to treat the most vulnerable communities.
- Expanding humanitarian donations with a focus on displaced populations and long-term impact

• See more on : www.foundation-s.sanofi.com